

Lightweight, Compact, Rapidly-Deployable Side Scan Sonar System

The all-new HydroScan® is a professional-grade side scan sonar for shallow water and rapid-deployment applications. L-3 Klein's proprietary Wideband Technology provides unmatched side scan range and resolution in a compact, one-man portable package.

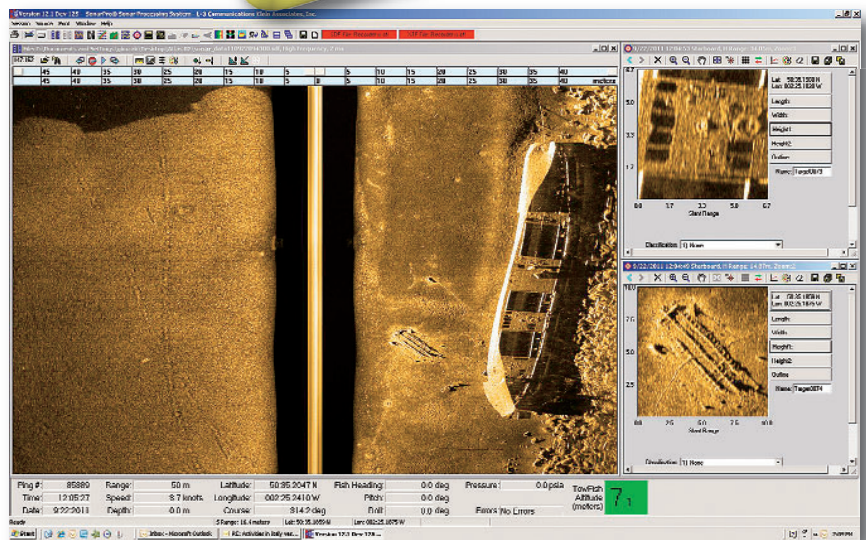


The HydroScan features real-time dual simultaneous frequency operation at both 455 and 900 kHz. 455 kHz provides excellent detection of medium-to-large size objects at ranges exceeding 175 meters (350 meters total swath), while 900 kHz provides the highest possible resolution at up to 75 meters range (150 meters total swath).

The unique compact design of the entire HydroScan system (including towfish and topside interconnect unit) allows for easy deployment and recovery. The lightweight towfish includes a built-in depressor wing and is customized for maximum stability and portability. The tow cable is readily attached via two rugged but small connections found in easily accessed locations. The topside interconnect unit (TIU) is a small, lightweight IP67-rated enclosure, operating on 110/220 VAC or 12 VDC (using a customer-supplied power inverter).

L-3 Klein's famous SonarPro® software makes both initial learning and day-to-day operation convenient and intuitive. Whether you're a rookie to side scan or a seasoned veteran, you'll come to quickly appreciate this easy-to-use, yet powerful system interface.

If you are a Search and Recovery specialist, you've never before seen a system that's this powerful, lightweight and portable. If you're operating in shallow water, whatever your profession, this is the perfect system for you. The HydroScan is the latest innovation from L-3 Klein's 40+ years of side scan sonar design experience. At L-3 Klein, we know what really matters: *The Difference is in the Image.*



KEY FEATURES

- Outstanding long-range performance at 455 kHz
- Incredible resolution and range scale at 900 kHz
- Dual-frequency simultaneous operation
- Compact and lightweight
- Easy to deploy, recover, and store
- Rugged components that are built to last!

APPLICATIONS

- Search and Recovery (SAR)
- Disaster, emergency and first responder surveys
- Rivers, streams, all shallow water surveys
- Maritime archeology

HydroScan Key Specifications



TOWFISH SPECIFICATIONS

Frequencies	455 kHz, 900 kHz
Pulse Technology	Wideband FM Chirp (1, 2, 4, 8 msec)
Beam Width	Horizontal: 0.34°, vertical: 45°
Range (typical)	150m @ 455 kHz 75m @ 900 kHz
Range Scales	11 settings: 15 to 200 meters
Construction	High-grade aluminum with hardcoat anodized powdercoat
Size	Length: 49.6" (126cm) Width: 12.6" (32cm) Height: 8.2" (21cm)
Weight	39.7 lbs (18 kg) in air
Depth Rating	100 Meters

TOPSIDE INTERCONNECT UNIT (TIU)

Power	110/120 VAC, 50/60 Hz or 12 VDC (with power inverter); <30W
Outputs	100 BaseTx
Navigation Input	RS-232, NMEA 0183
Splash-Proof	Rated to IP67
Size	10"L x 8"W x 5"H

SONARPRO®

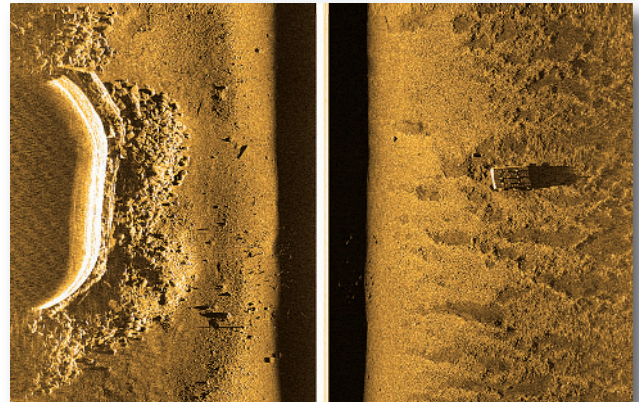
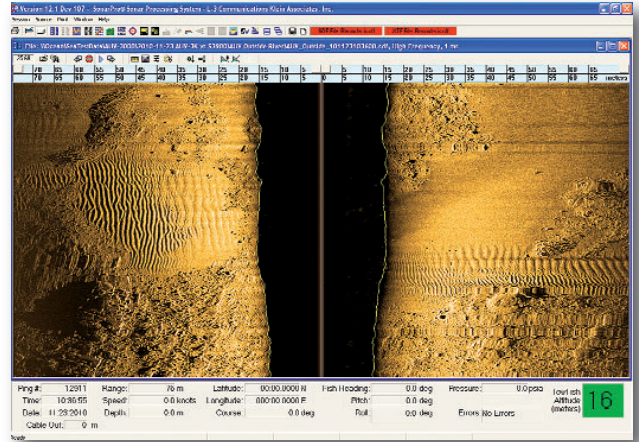
Operating System	Windows
Sonar Software	SonarPro®
Data Format	SDF or XTF or both (selectable)

TOW CABLE

Tow Cable	Lightweight 50m tow cable (standard)
-----------	---

DOCUMENTATION/SUPPORT

Free 24/7 "Hot Line" Customer Support



SonarPro®

OPTIONS

- SonarPro Laptop
- 100 Meter Lightweight Tow Cable
- Reusable Carrying Case
- Tow Cable Line Weight

Klein Associates, Inc.

11 Klein Drive

Salem, NH 03079

Tel: 603.893.6131

Fax: 603.893.8807

Email: Klein.mail@L-3com.com

www.L-3Klein.com